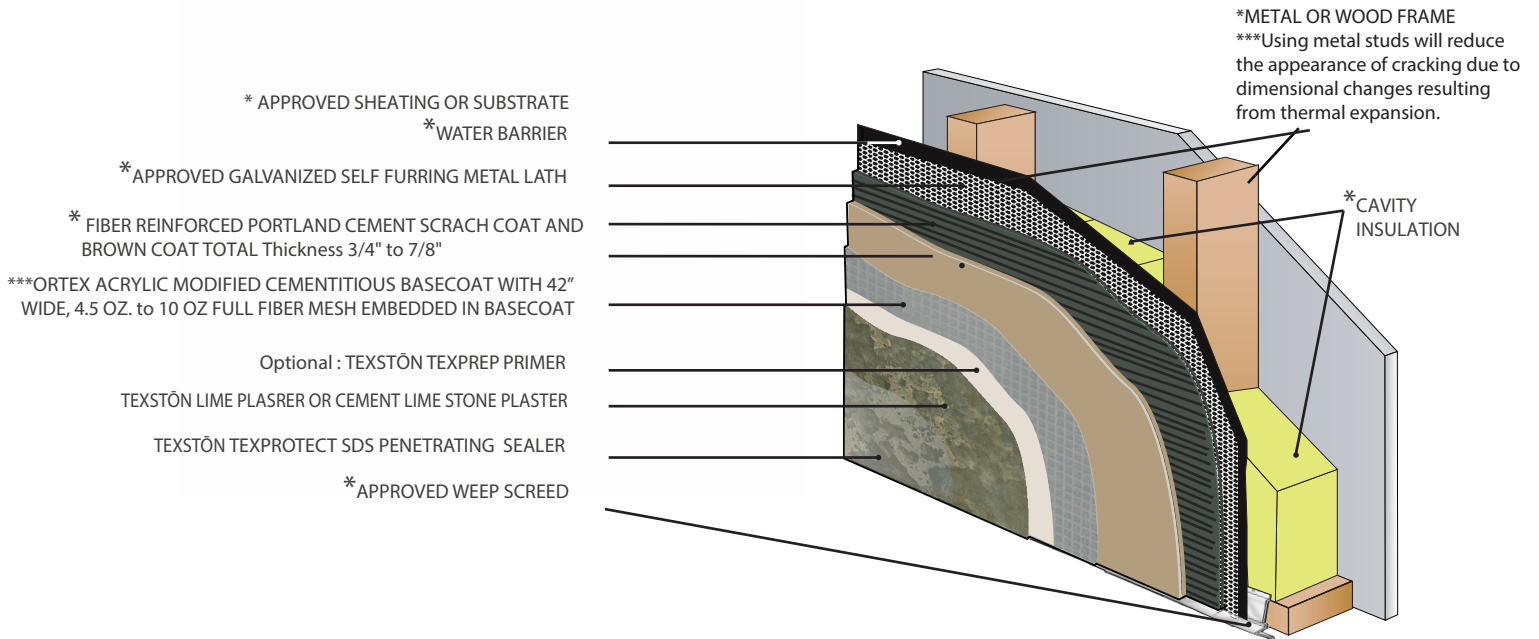


## Texton Finishes Installation Detail Three Coat Conventional Hard Coat System



\*\*This detail is for general information and guidance only.  
Final products detail is the responsibility of the project's  
designer/Architect.

\*Supply by others

\*\*\*Optional: In order to add strength and flexibility as  
well as to tremendously reduce the appearance of  
cracks in the finish coat USE heavier mesh, like 10 oz.  
Instead of 4.5 oz.

### INSTALLATION GUIDE

These instructions will serve as a basic construction guideline for application of Texton finishes over lath, scratch, and brown cement applications. The basis of the installation can be found on National Lath and Plaster Institute standards for application and finishing of cement Lath and Plaster or @ The Association of the Wall and Ceiling Industry [www.awci.org](http://www.awci.org)

**APPLICATION:** All waterproofing and substrate products should be installed in accordance with manufacturer's guidelines and in accordance with all applicable local building codes. Follow the ASTM C-150 standard for cement hard coat stucco system

- 1- Inspect all framing to meet tolerances, all studs 16" OC. To minimize thermal expansion, if possible use metal studs.
- \*\*\*\*Exterior Control Joints: every 144 SQF max area w/out control joints / all floor line, door opening and window need control joints at least one.
- 2- When applying scratch and brown coat, use acrylic admixture (Texton RPA or equal) and Polypropylene fibers to minimize cracks.
- 3- Let the scratch coat dry, than apply brown coat and let it completely dry.
- 4- Anti-fracture membrane layer: Use 38" or 42" wide, 4.5 oz. or (if budget allows) even better, a 10 oz. alkali resistant full fiber mesh. Apply over complete field of moist
- Brown coat, embed in the Texton ORTEX polymer modified cementitious base-coat. All joining mesh should overlap by 2-1/2" and skimmed 1/2" either side of overlap
- connections, achieving flat appearance and free of humps. Final appearance, should be free of "checkerboard" outline of the mesh weave, mesh should be flat and fully
- encapsulated. If needed, double-back with a tight base coat layer to fully encapsulate the mesh. Do not hard trowel/ burnish.
- 5- Allow to cure 24 to 48 Hours and apply Backer-Rod and sealant at areas of termination.
- 6- Optional: if looking to get more open time, apply 2 coats of TexPrep primer sealer. Let flash between coats, and let dry for 30 to 60 minutes. Primer could collect dust, apply
- plaster over fresh primer at the same-day or next.
- 7- Apply Texton finish following the Provided step-by-step application process
- 8- Allow to cure 24 to 72 Hours!
- 9- Apply 3 to 5 coats of Texton penetrating sealer per Installation Instructions.

\*\*\*\*Exterior Control Joints:

- If a visual control joints are not desired, follow all or part of the following recommendation to tremendously reduce the appearance of cracks in the finish coat:

- Before application of the scratch coat, make sure all loads are on the structural, like: roof, drywall floors etc..
- Using metal studs instead of wood or add blocks between the wood studs.
- Consider using additional bracing between the studs.
- In the scratch and brown coat, use acrylic admixture Texton RPA or equal, and Polypropylene fibers mixed.
- Moisture cure brown coat for the 1st 3 to 5 days.
- USE a heavier fiber mesh, like 10 oz. Instead of 4.5 oz..in the acrylic modified cement base-coat.

This detail is subject to change.